

Rogers Dam



Rogers Dam



River Hydro Asset Key Terms

Definitions/purpose of the major components and aspects critical of safe, compliant, and reliable operations:

- **Dam:** The entire barrier to hold back the water (reservoir) typically consists of embankments, spillways, and powerhouse
- **Spillway:** Primary location for water flow when not used for generation
- **Powerhouse:** Location of generation units
- **Embankment:** Earthen barrier to hold back the reservoir, which contains a hydraulic barrier (core wall)

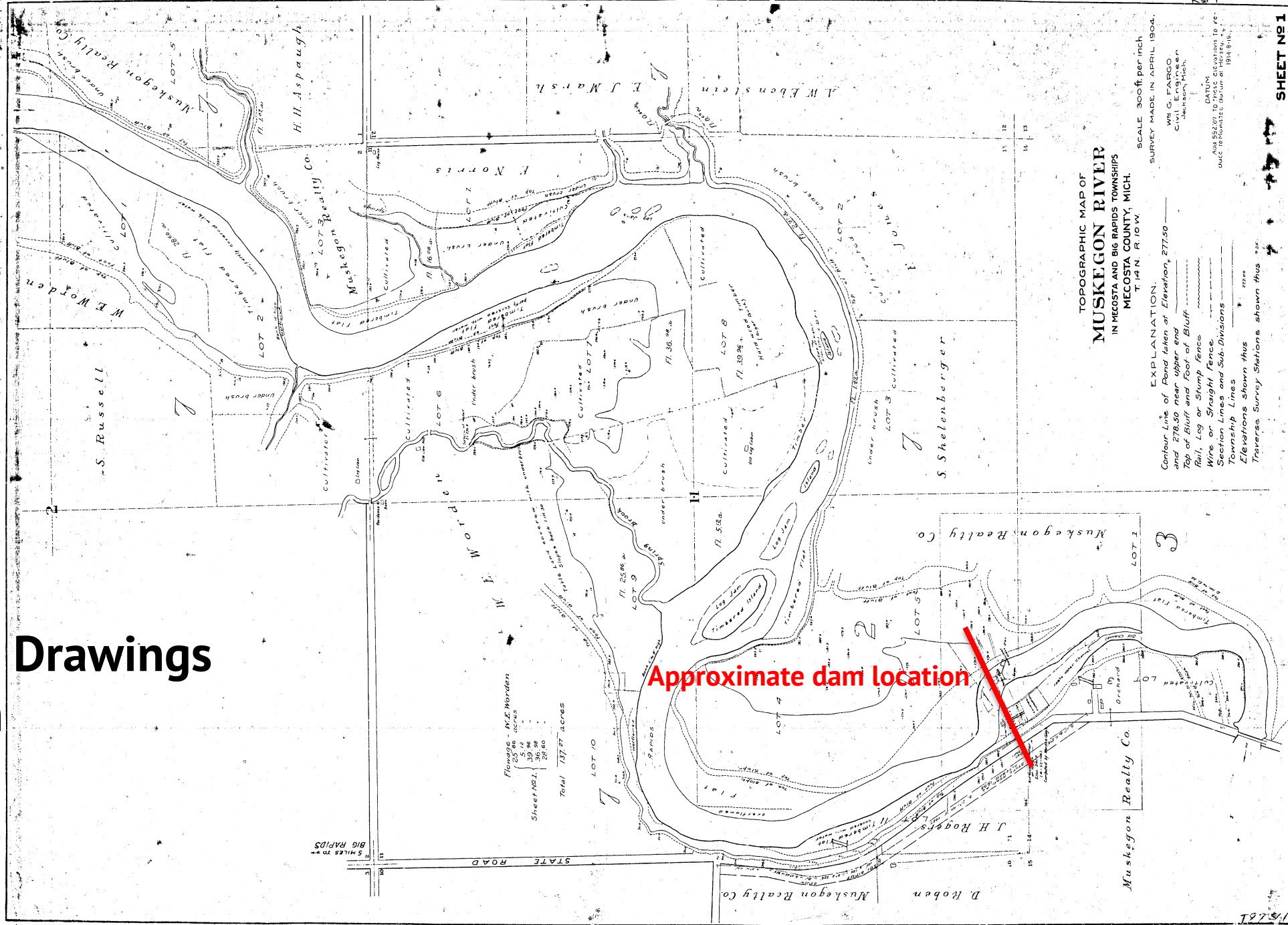


Rogers Dam Structures



Original Survey Drawings for Rogers Dam

PSC



Rogers Hydro

- Capable of producing about 6,750 kilowatts, it is the oldest hydro still operated by Consumers Energy.
- It was completed in 1906.
- The powerhouse was destroyed by fire in 1921. It was rebuilt and returned to service in 1922.



General Information

FERC License Expiration Date:

June 30, 2034

Dam Height (ft.): **40**

Length of Dam (ft.): **800**

Drainage Area (sq. miles): **1,749**

Impoundment Area (acres): **449**

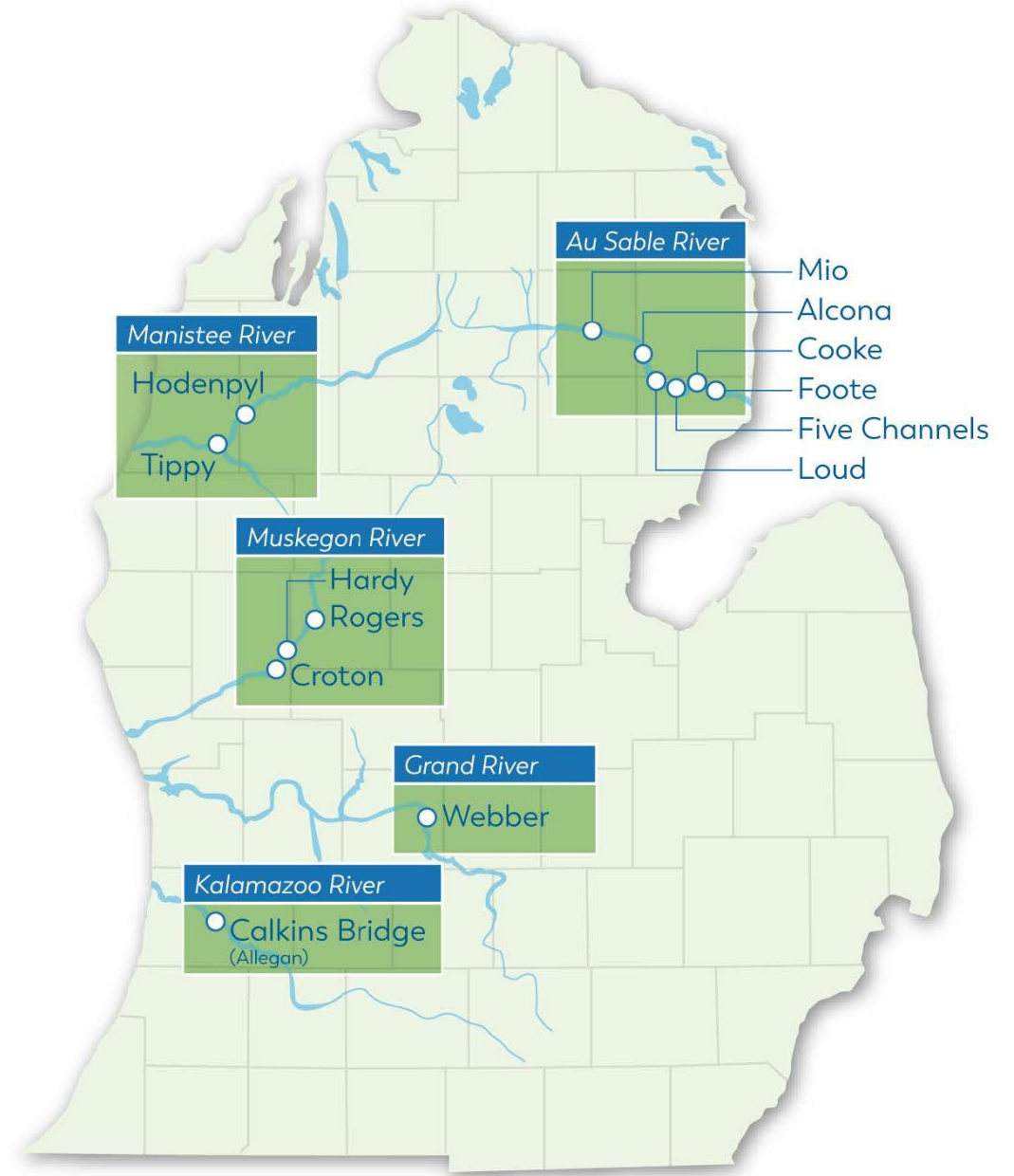
Age (years): **116**

FERC Hazard Classification: **High***

Approximate Population at Risk: **<800**

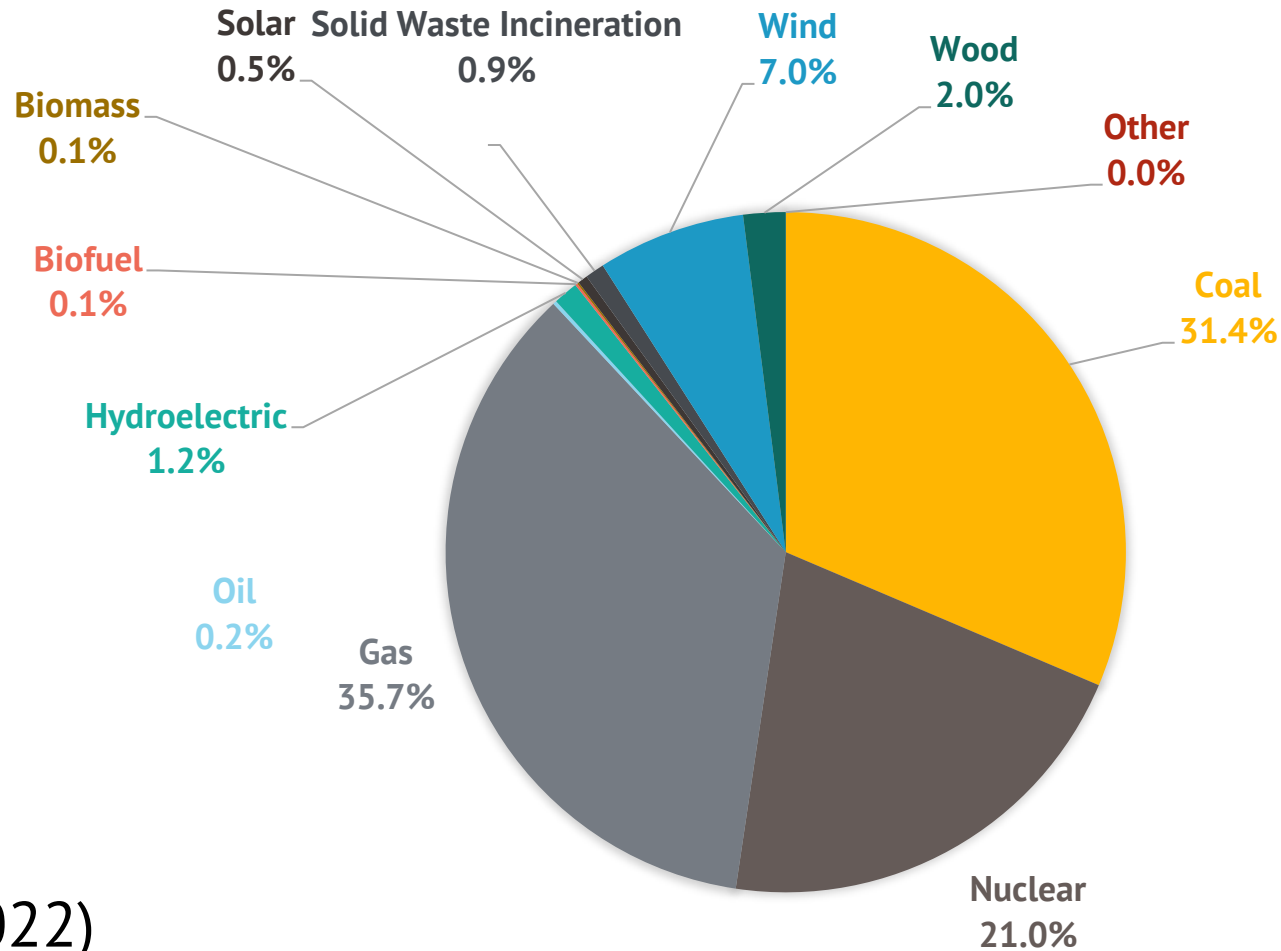
Approximate Recreation Use:

- 2,900 visitors annually
- 3 boat docks
- Popular park with all access fishing pier and picnic areas



**Failure or misoperation will probably result in loss of human life.*

Percentage of Fuel Type Used to Produce Consumers Energy's Total Electricity



(Apr 2021-Mar 2022)