

credible!

What is Consumers Energy?



Energy is important in our lives. Think about the things you do each day that use energy. Watching TV, turning on a light, using the Internet or swimming in a heated pool all use energy.

Consumers Energy provides electricity and natural gas to help you do these things each day. The energy we supply helps make life better for you and your family.

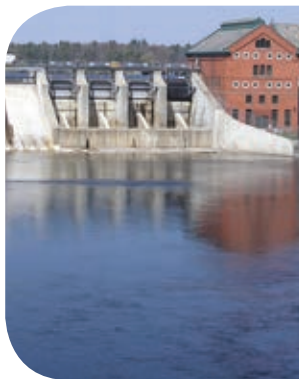
Electricity is made from different sources, including:

W _ _ ND

W _ _ T _ _ R

Directions:

Fill in the missing vowels (A, E, I, O, U) for each energy source.



NATUR _ _ L G _ _ S

C _ _ _ L



Wind power is very popular. It has a lot of "fans."



What are Some Different Types of Energy?

1. **Coal** is found underground and was formed millions of years ago from dead plants and animals.



2. **Natural gas** comes through pipes underground. It can be used to cook meals on stoves.



3. **Water** comes from lakes and oceans. It forms clouds and comes back to the ground as rain or snow.



4. **Wind** is moving air. It's what makes leaves blow and kites fly.

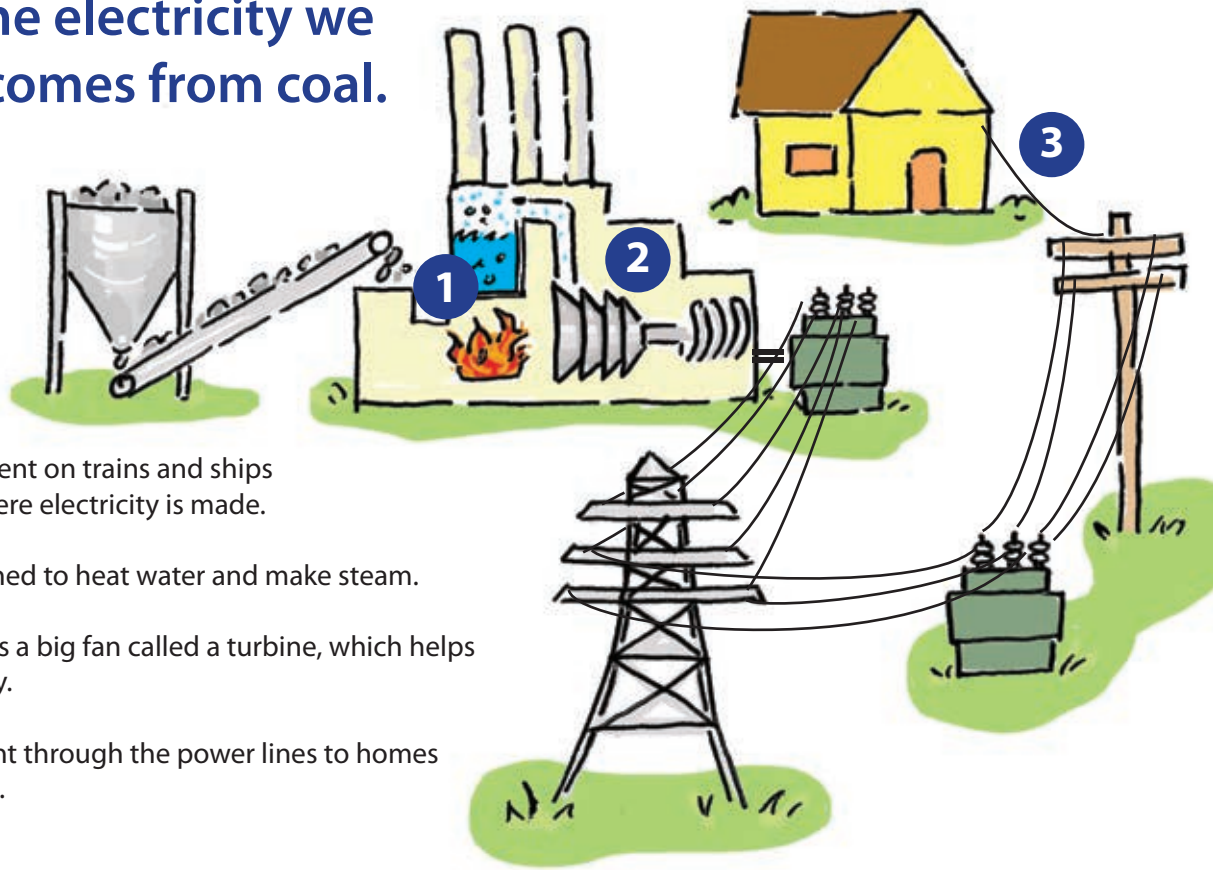


Consumers Energy

Count on Us

Most of the electricity we produce comes from coal.

To make electricity:



- 1 The coal is burned to heat water and make steam.
- 2 The steam spins a big fan called a turbine, which helps make electricity.
- 3 Electricity is sent through the power lines to homes and businesses.

The energy that comes from wind helps people do different activities.

Directions:

Complete the maze below and cross out the pictures of activities that do not need wind energy.

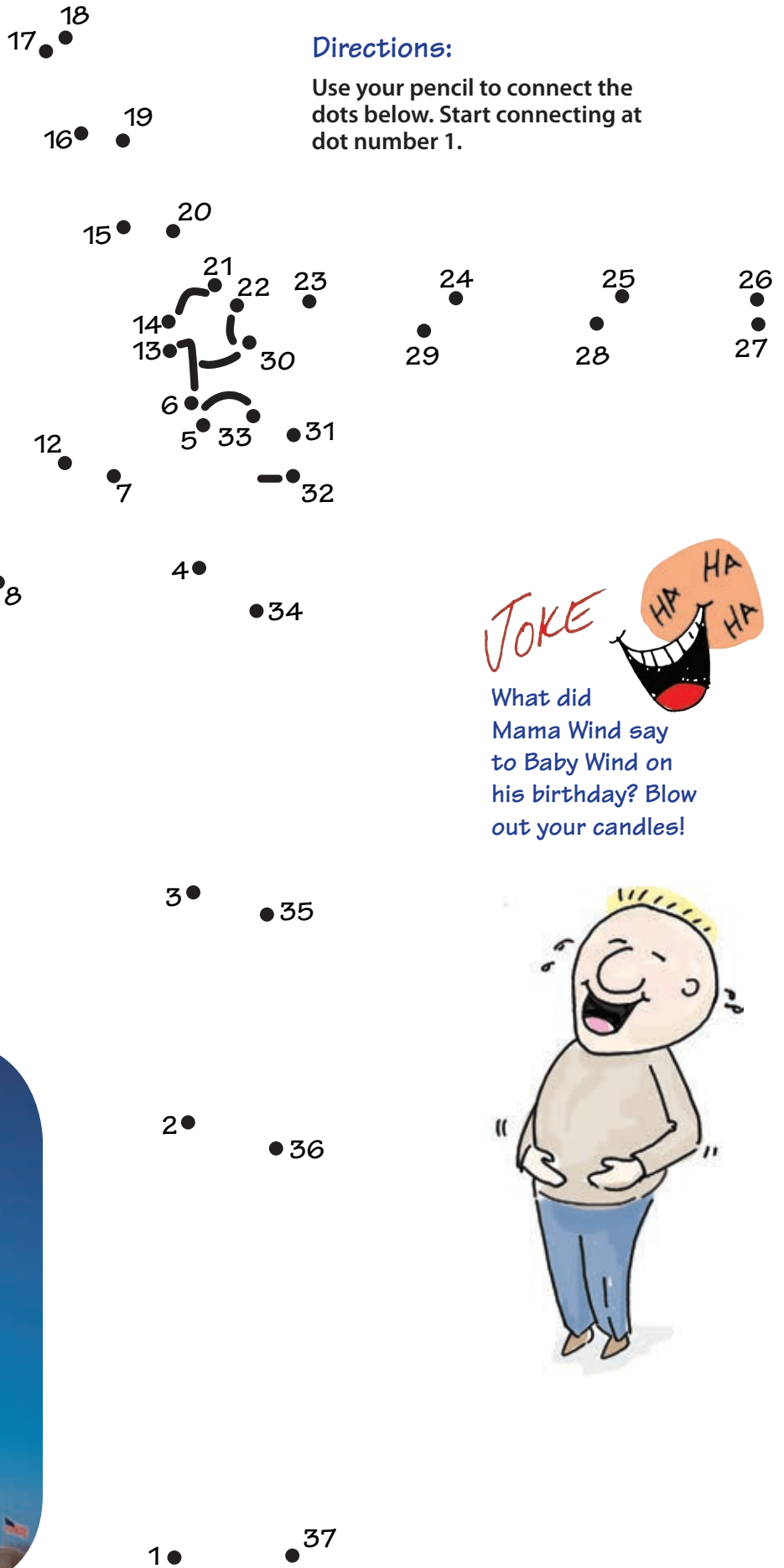
Start

Finish

Connect-the-dots Wind Turbine.

Wind is used to make renewable (re-new-a-ble) energy. Renewable energy comes from the wind, sun, water and other sources. Those sources can be used over and over again to make electricity.

Consumers Energy uses a wind turbine to take the wind and turn it into energy that can power lights, computers or TVs.



Directions:

Use your pencil to connect the dots below. Start connecting at dot number 1.

11 ● 8 ●

10 ● 9 ●

FUN FACT



Most wind turbines used to generate electricity stand about 330 feet tall, which is about 25 feet taller than the Statue of Liberty.



What did Mama Wind say to Baby Wind on his birthday? Blow out your candles!



1 ●
Start

37 ●

What Uses Electricity in Your Home?

People didn't always have electricity in their homes. But things are much different today.

Our houses have many appliances, toys and tools that use electricity.

Directions:

Here's a fun activity you can do at home with your parents to learn more about electricity.

Do a scavenger hunt to learn which items in your home use electricity.

Below is a list of items you will need to find.

It's easy to overlook some items. Remember to look in closets, storage spaces and the garage.

Record how often is each item used. Every day or only once in a while? How important is the item to you and your family?

Appliance	How Often Do You Use This Appliance? (Always, Sometimes or Never)	How Important is the Appliance to You and Your Family? (Very Important, Kind of Important or Not Important)
Computer	Sometimes	Very
DVD Player		
Microwave		
Refrigerator		
Stove		
Toaster		
TV		
Video Game System		