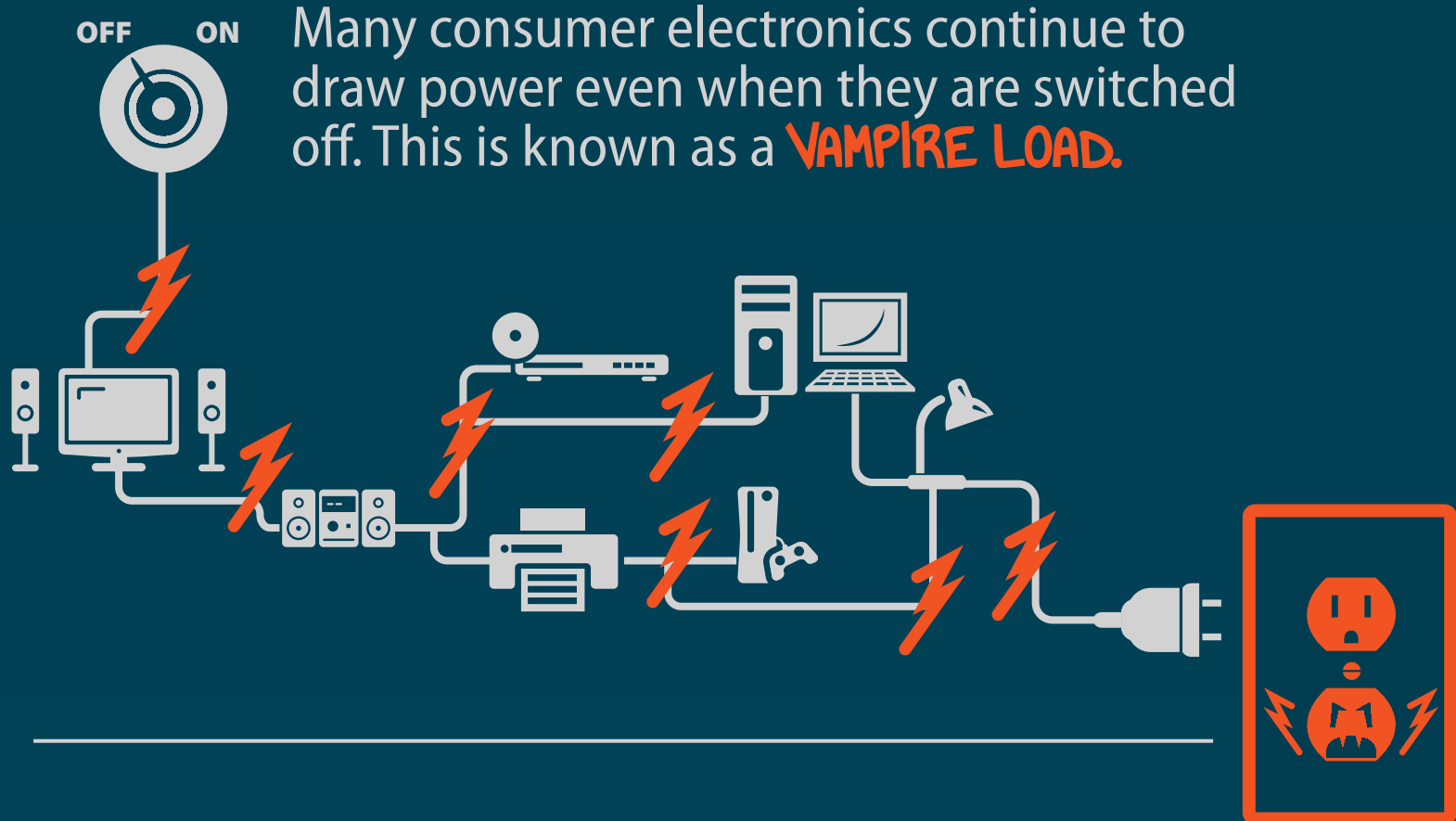
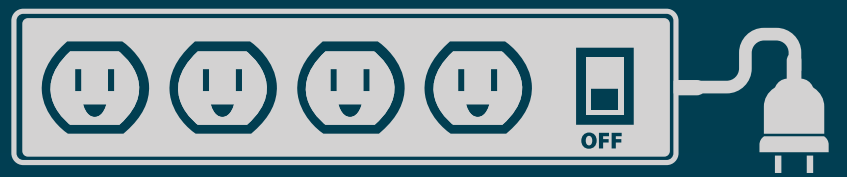


Saving Energy Through ADVANCED POWER STRIPS



Many consumer electronics continue to draw power even when they are switched off. This is known as a **VAMPIRE LOAD**.

VAMPIRE LOADS add up to about **\$200** in yearly energy costs for an average home

\$200

This **WASTED ENERGY** could have powered **11,000,000** homes

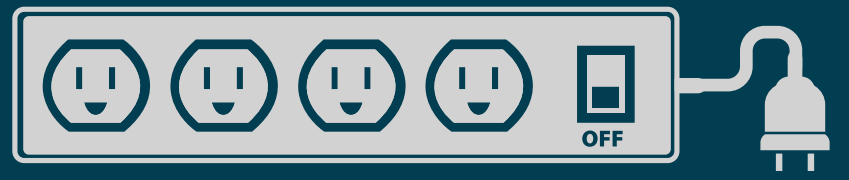


About **ADVANCED POWER STRIPS**

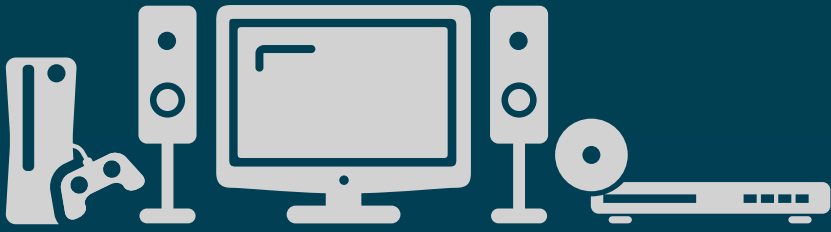
Advanced Power Strips (APS) look just like ordinary power strips, except that they have built-in features that are designed to reduce the amount of energy used by many consumer electronics. There are several different types of APSs on the market, but they all operate on the same basic principle of shutting off the supply power to devices that are not in use. By replacing your standard power strip with an APS, you can significantly cut the amount of electricity used by your home office and entertainment center devices, and save money on your electric bill.

ADVANCED POWER STRIPS

Which one is right for me?



I want to stop **WASTING ENERGY** in my ...



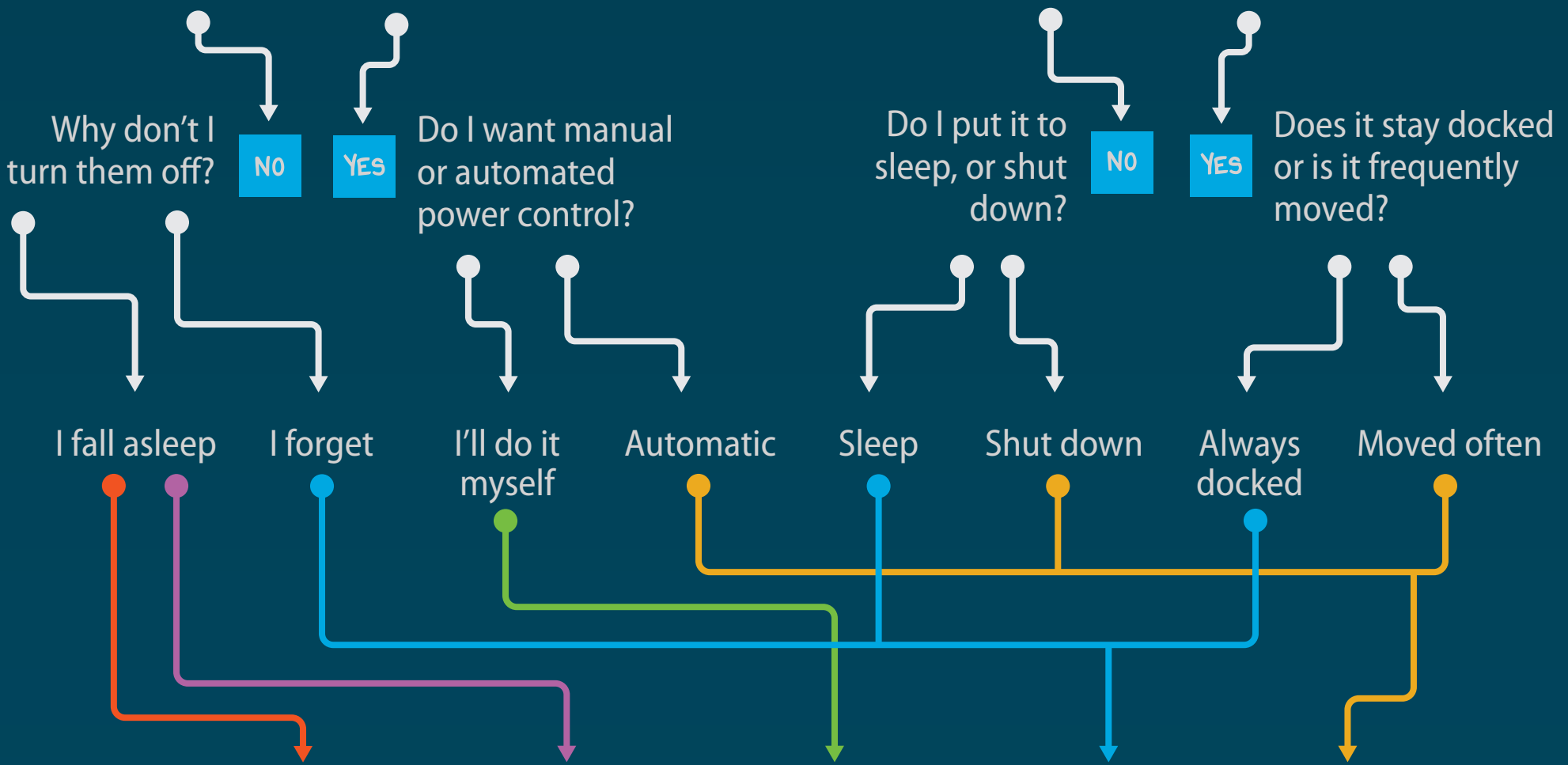
ENTERTAINMENT CENTER

I always turn off my electronics when done

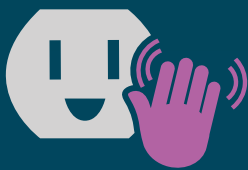


HOME OFFICE

Is the computer a laptop or tablet?



Timer Power Strip



Activity Monitor Power Strip



Remote Switch Power Strip



Master-Controlled Power Strip



Masterless Power Strip

	Timer Power Strip	Activity Monitor Power Strip	Remote Switch Power Strip	Master-Controlled Power Strip	Masterless Power Strip
COST	High (two dollar signs)	High (two dollar signs)	Low (one dollar sign)	High (two dollar signs)	High (two dollar signs)
FEATURES	Power strip automatically turns off outlets based on a pre-set schedule.	Power strip looks for signs of activity in the room, and turns off outlets if none is detected.	Power strip can be turned off by the user via a remote switch.	When a primary device (such as a computer or TV) is turned off by the user, the power strip automatically turns off the controlled outlets where the peripheral devices (such as the printer or game console) are plugged in.	When all of the controlled devices are turned off, the power strip turns off power to those outlets completely, eliminating all of the vampire loads.
POSSIBLE DRAWBACKS	You have to set up the timer and stick to your schedule for maximum energy savings.	Motion sensors don't always work perfectly.	To save any energy, you have to remember to turn off the power strip each time.	It can be tricky to select which appliance should be your "master" device.	Turning off one high-powered appliance could turn off the entire power strip.
WHAT TO LOOK FOR	Digital or dial timer.	Motion sensor or an infrared "eye" that detects remote control use around the TV or stereo.	A tethered switch or a remote switch.	One outlet is labeled as the "master."	No "master" outlet. Description may include "automatic switching" or "power detection."